

A photograph of a three-story Victorian brick house. The house features a prominent bay window on the ground floor with white shutters and a green door with the number '43' above it. The upper floors have windows with decorative white surrounds. A satellite dish is visible on the wall. The house is part of a row of similar buildings.

Julian Reid

**43B Jenner Road, London, N16 7SB**

A very spacious two bedroom flat arranged on the upper floors of this converted Victorian House. Beautifully presented accommodation and chain free

[julianreid.co.uk](http://julianreid.co.uk)

**Guide Price £629,000**  
**Leasehold**

- **2 Bedrooms**
- **Council Tax Band: C**
- **EPC Rating: D**
- **Beautifully presented**
- **Excellent location**

A beautifully presented, two bedroom flat arranged on the upper floors of this fine converted Victorian house. The flat, which was fully refurbished four years ago, offers light and bright accommodation just in excess of 750 square feet. Large, open living space with well equipped kitchen area. Two double bedrooms and a large modern bathroom. Jenner Road is a sought after residential road, just east of Stoke Newington Common and within a few minutes walk of Rectory Road overground station (regular service into Liverpool Street). The vibrant selection of shops, bars and restaurants of both Stoke Newington High Street and Church Street are all within easy walking distance. 94 years Leasehold, ground rent £200 pa and current service charge is £2640 pa



Julian Reid

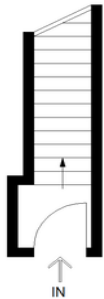
51 Stoke Newington Church Street London N16 0AR  
jreid@julianreid.co.uk Fax: 020 7923 8651

+44 (0) 20 7923 8650

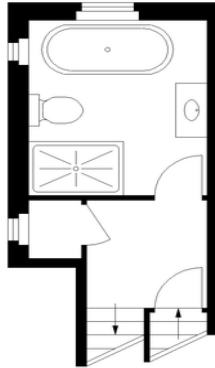
# Jenner Road, N16

Approximate Gross Internal Area

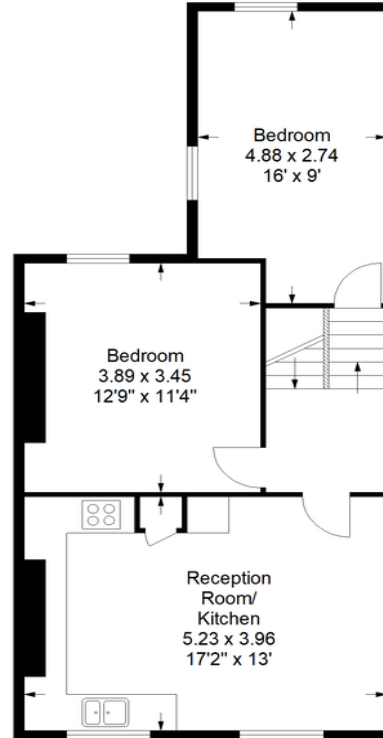
Ground Floor = 38 sq ft / 3.53 sq m  
Raised Ground Floor = 141 sq ft / 13.09 sq m  
First Floor = 575 sq ft / 53.41 sq m  
Total = 754 sq ft / 70.03 sq m



Ground Floor



Raised Ground Floor



First Floor

ion to the property either  
ade in these particulars.  
:tances are approximate.  
ng., building regulation or

