



Julian Reid

**41 Sandbrook Road, London, N16 0SH**

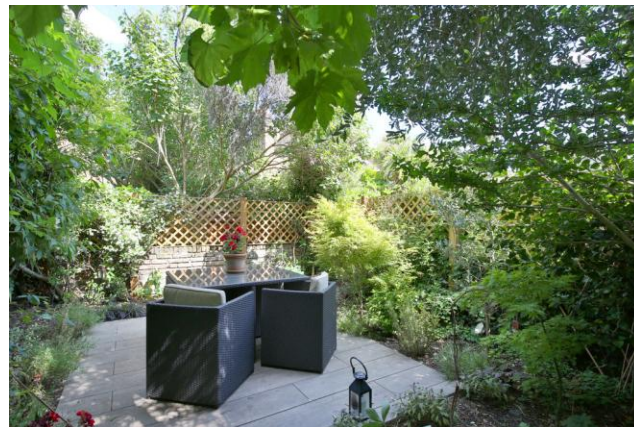
Super and very spacious late Victorian terraced house on popular road, south of Stoke Newington Church Street presented with much charm and character

[julianreid.co.uk](http://julianreid.co.uk)

**Guide Price £1,350,000**  
**Freehold**

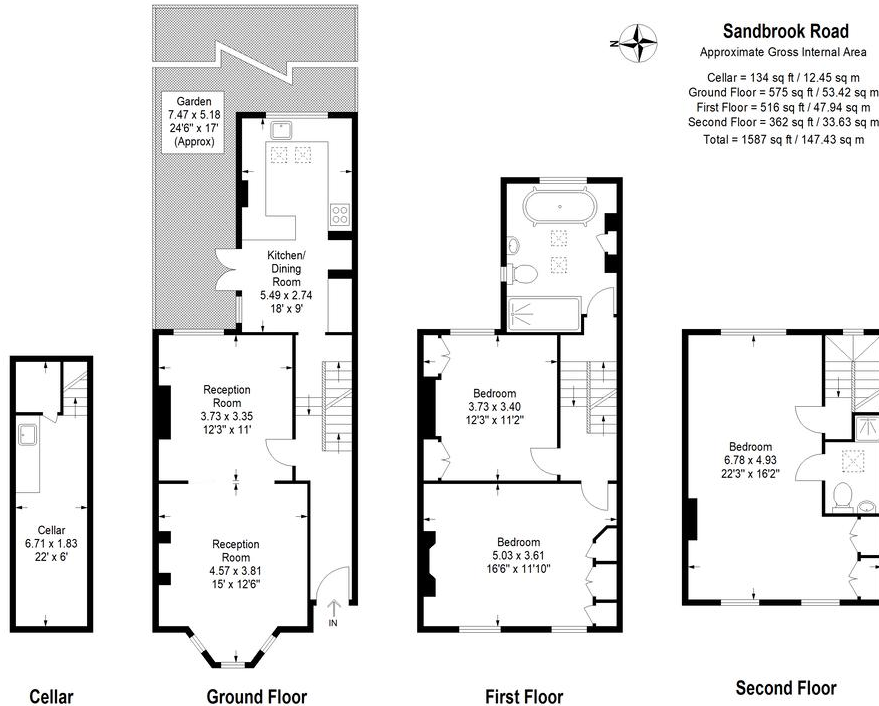
- **3 Bedrooms**
- **Council Tax Band: E**
- **EPC Rating: D**
- **2 Bathrooms (one en-suite)**
- **Large kitchen/diner**

A super and well-presented, late Victorian terraced house with a wonderful atmosphere full of charm and character. The property features a large, loft bedroom with en-suite shower room offering excellent ceiling height and natural light. There are two further bedrooms on the first floor with a large and luxurious family bathroom on the mezzanine level. The ground floor offers a large, through reception room into a light bay window and super kitchen/diner which has been well fitted and equipped and offers access onto a private rear garden. From the hallway there are steps down to a full height dry cellar which is set up as storage and utility with plumbing for a washing machine etc. Sandbrook Road is a very popular road just south of Stoke Newington Church Street and well placed for local schools, Clissold Park and all the amenities of this vibrant area of London



---

Julian Reid  
51 Stoke Newington Church Street London N16 0AR  
[jreid@julianreid.co.uk](mailto:jreid@julianreid.co.uk) Fax: 020 7923 8651  
+44 (0) 20 7923 8650



JULIAN REID SPECIAL DISCLAIMER:-  
For Illustration Purposes Only - Not To Scale  
Floor plan For Julian Reid

**Important notice:** Julian Reid, their clients and any joint agents give notice that: 1: They are not authorized to make or give representations or warranties in relation to the property either here or elsewhere, either on their own behalf or on behalf of the client or otherwise. They assume no responsibility for any statement that may be made in these particulars. These particulars do not form part of any offer or contract and must not be relied upon as statements or representations of fact. 2: Any areas, measurements or distances are approximate. The text, photographs and plans are for guidance only and are not necessarily comprehensive. It should not be assumed that the property has all necessary planning, building regulation or other consents and Julian Reid have not tested any services, equipment or facilities. Purchasers must satisfy themselves by inspection or otherwise.



